



GUILDFORD  
BOROUGH

**James Whiteman**  
Managing Director

**[www.guildford.gov.uk](http://www.guildford.gov.uk)**

Dear Councillor

**PLANNING COMMITTEE - WEDNESDAY 6 JANUARY 2021**

Please find attached the following:

**Agenda No    Item**

8.     **Late Sheets - Presentations (Pages 1 - 52)**

Yours sincerely

Sophie Butcher, Democratic Services Officer

Encs

This page is intentionally left blank

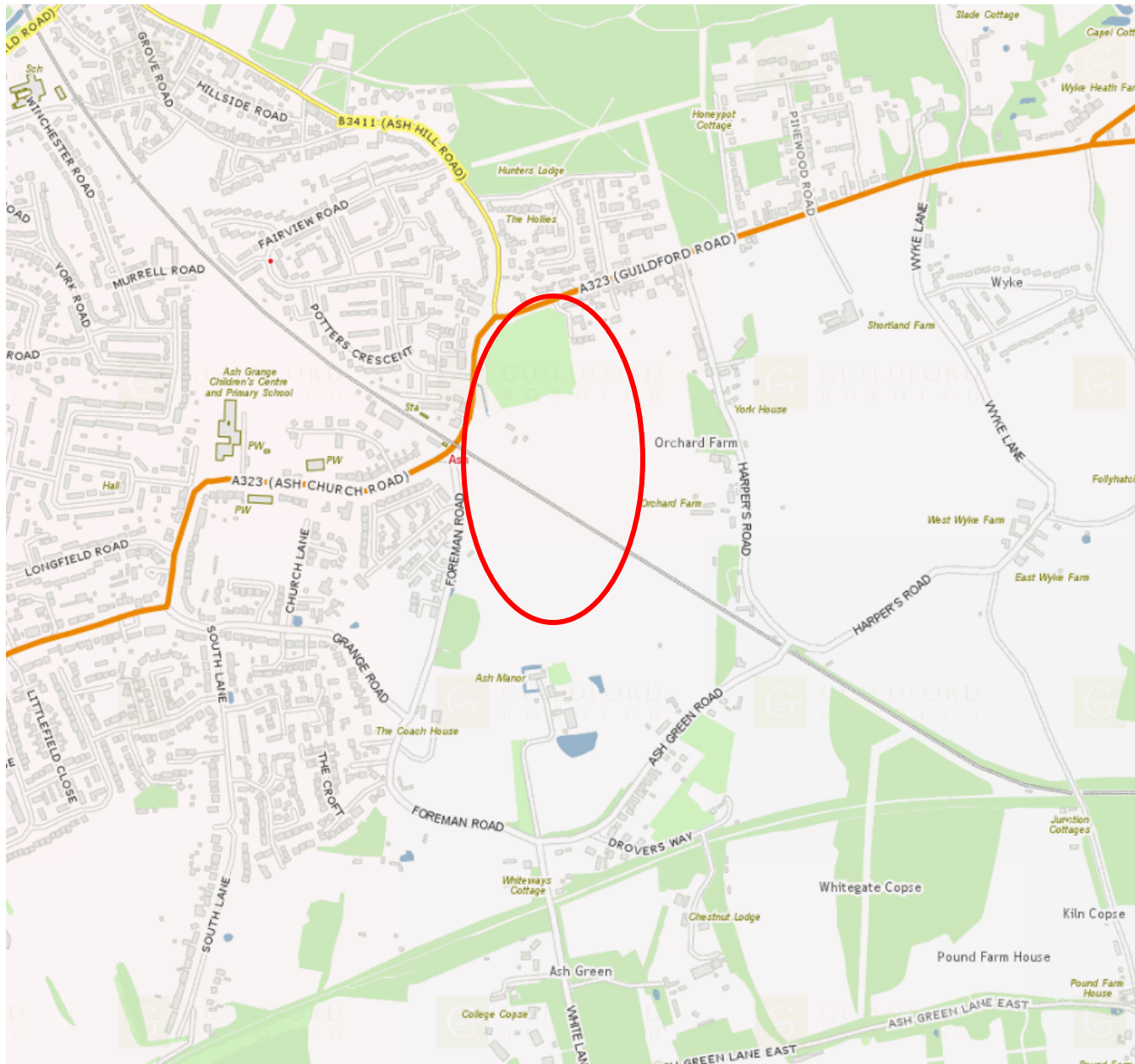
**19/P/01460**

**Land east of Ash Railway Station &  
Foreman Road & south of, Guildford  
Road, Ash**

[Previous](#)

[Next](#)

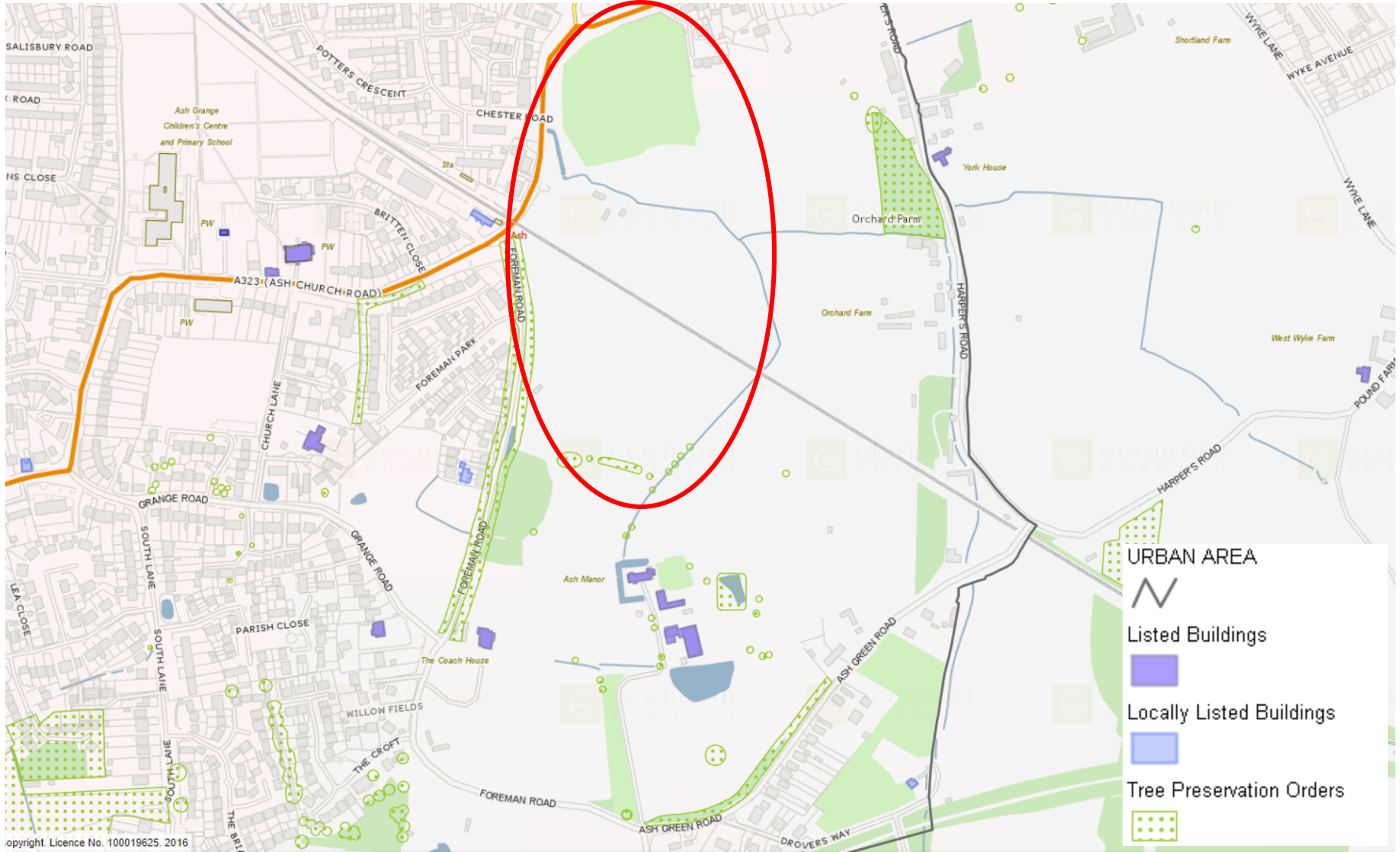
[Home](#)



[Previous](#)

[Next](#)

[Home](#)



[Previous](#)

[Next](#)

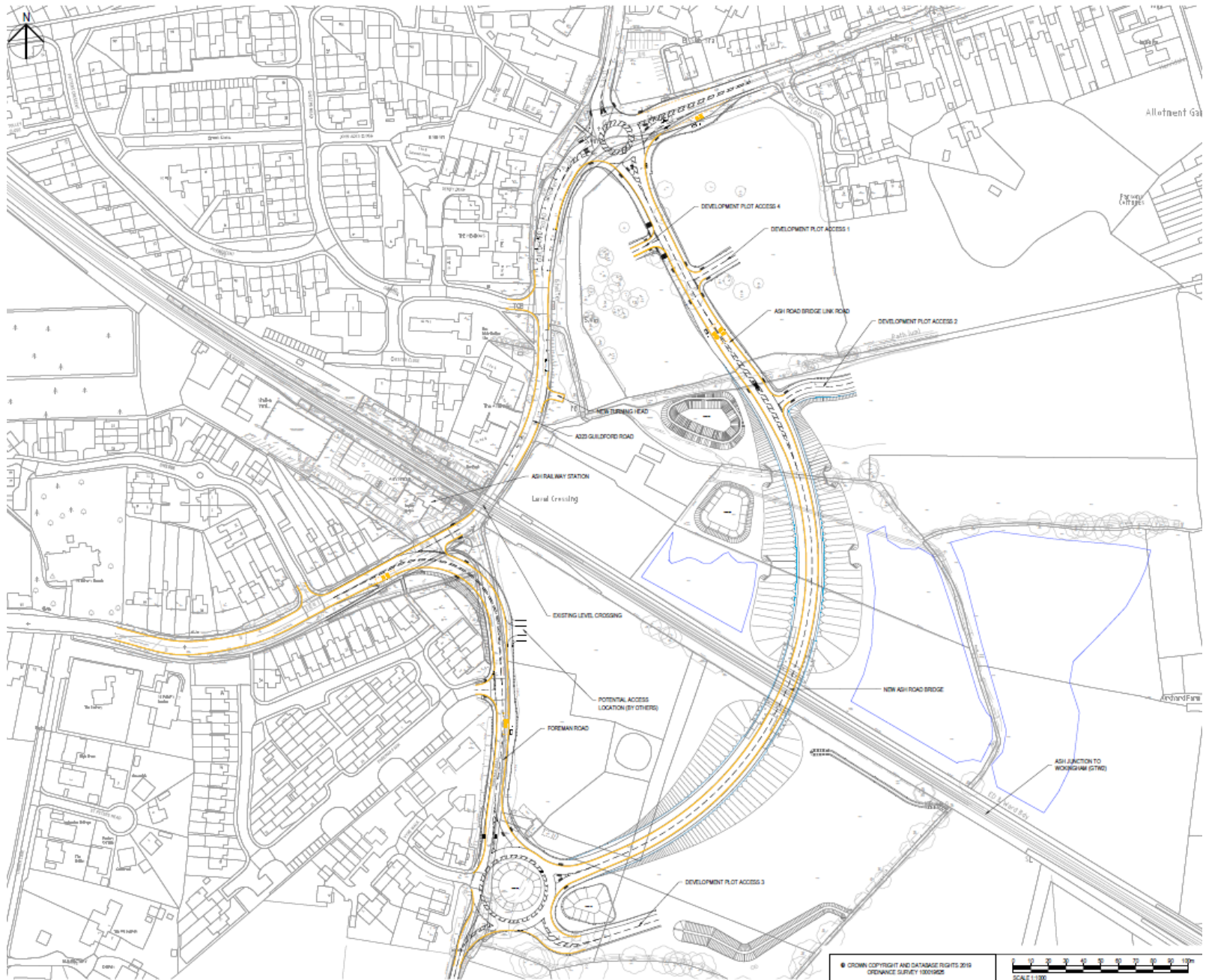
[Home](#)



[Previous](#)

[Next](#)

[Home](#)



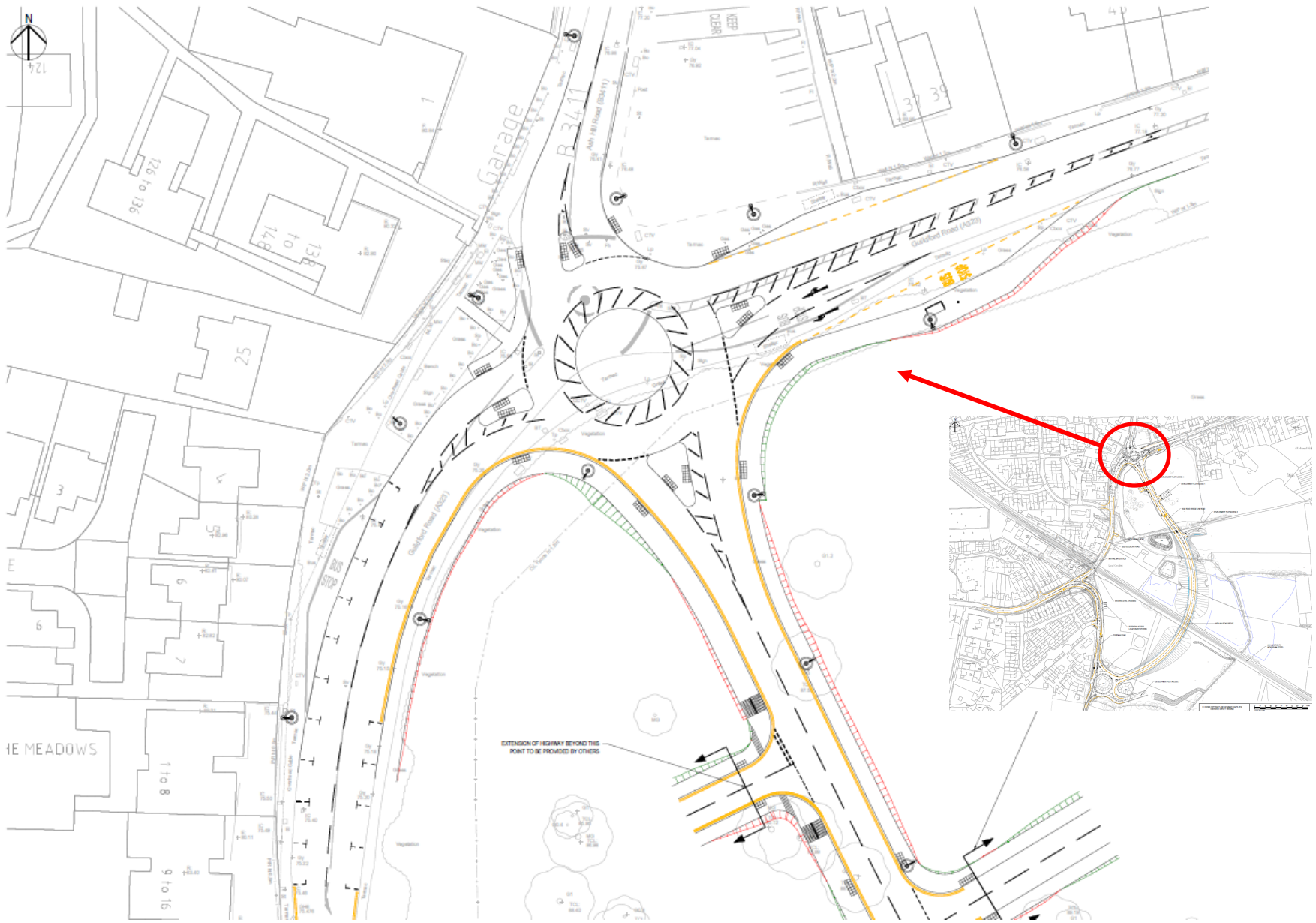
[Previous](#)

[Next](#)

[Home](#)



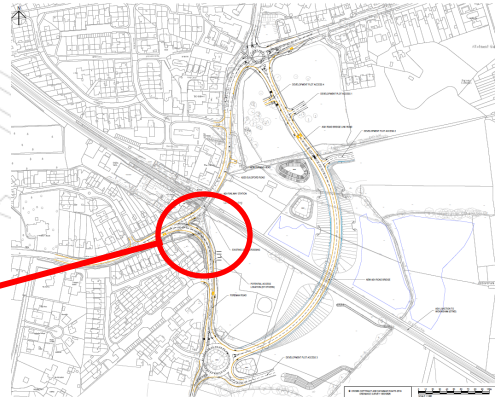
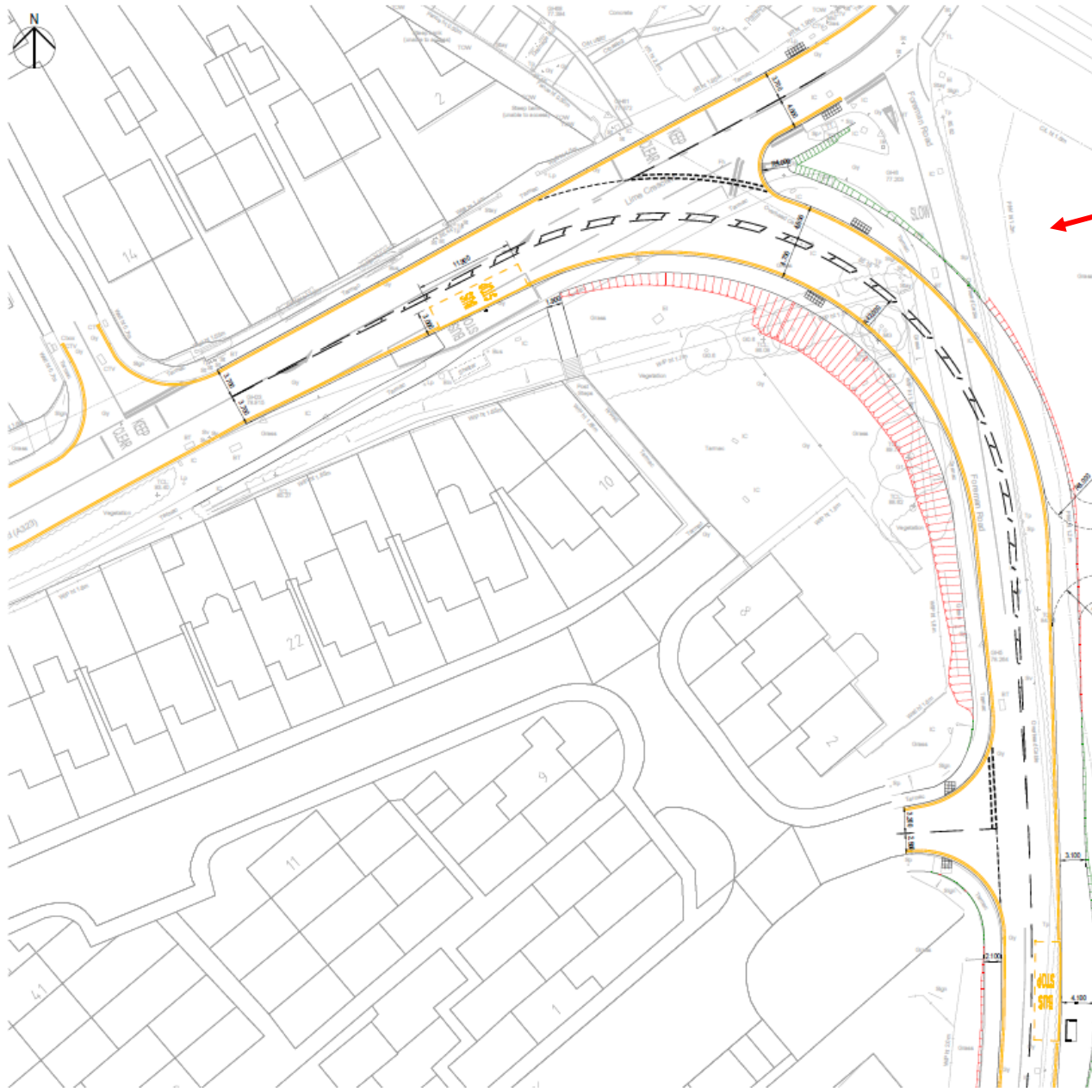




[Previous](#)

[Next](#)

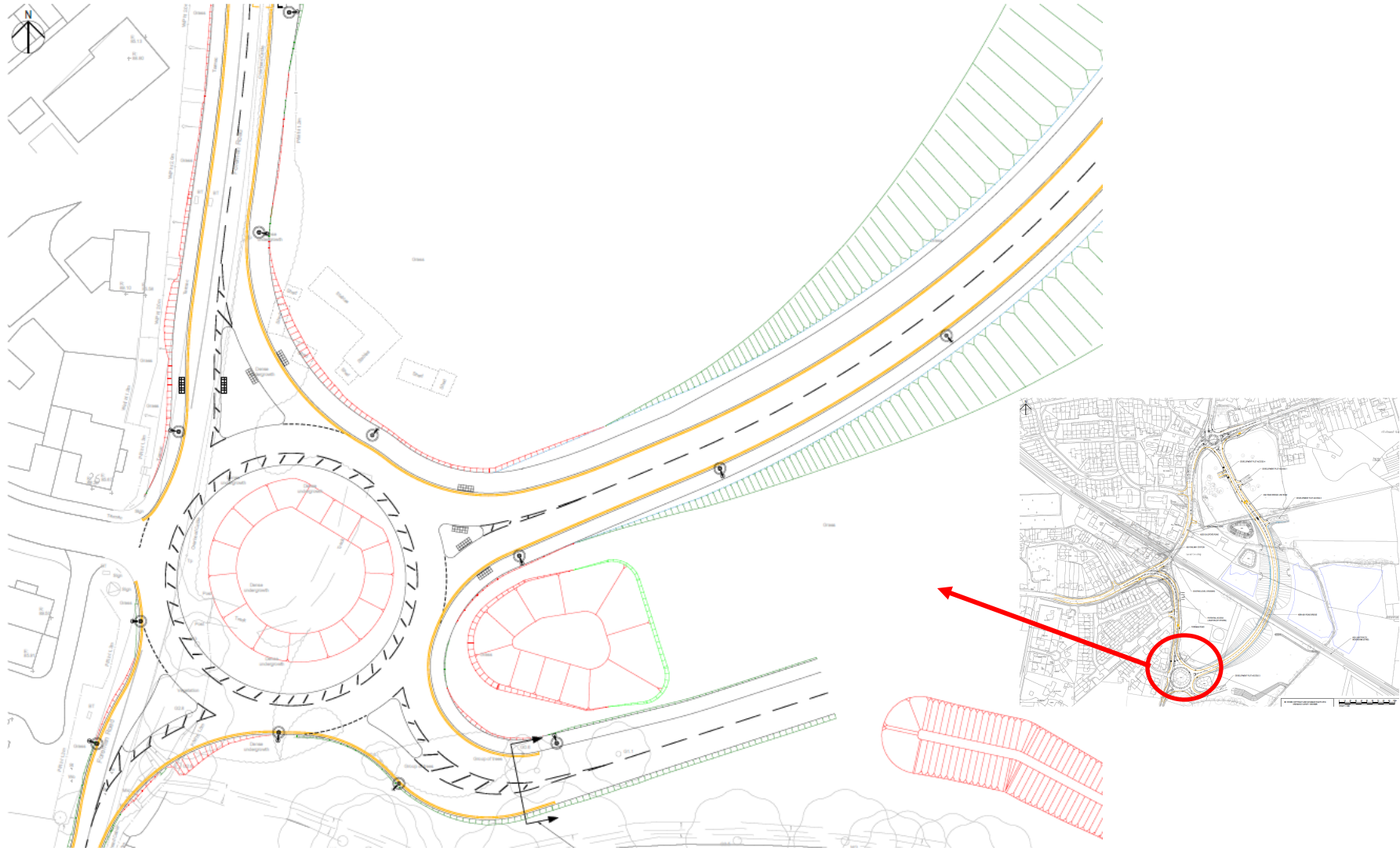
[Home](#)



[Previous](#)

[Next](#)

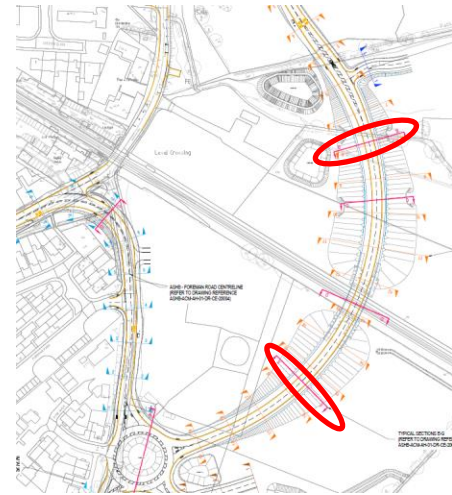
[Home](#)



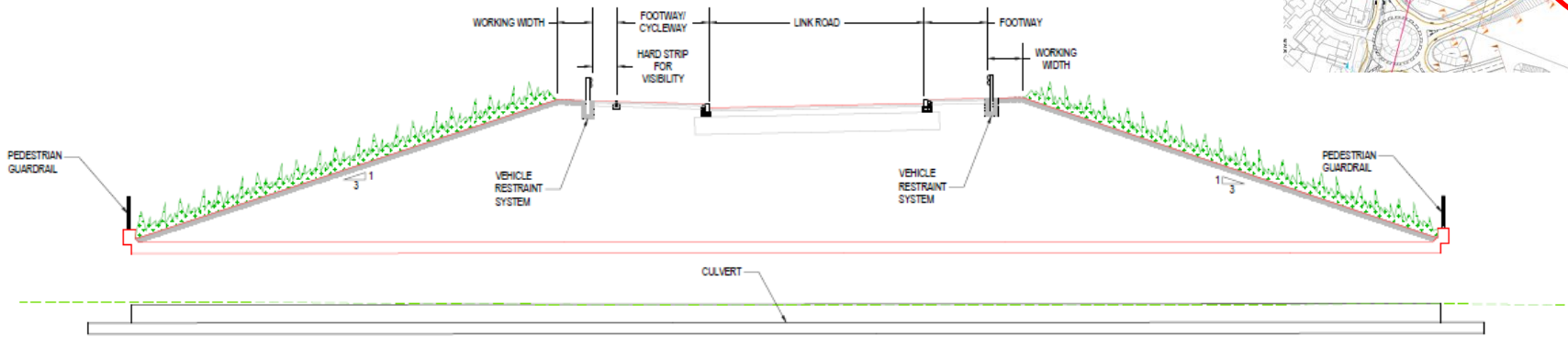
[Previous](#)

[Next](#)

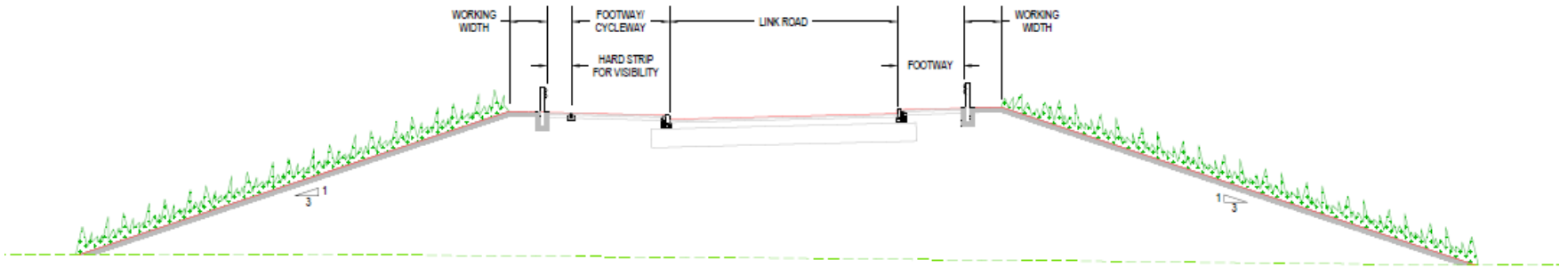
[Home](#)



SECTION B-B  
LINK ROAD AT CULVERT



SECTION E-E  
SOUTHERN END OF LINK ROAD




[Previous](#)

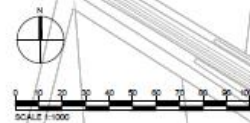
[Next](#)

[Home](#)



**KEY**

-  LE 1.1 Amenity Grass Area  
Road Verge and Embankments
-  LE 1.3 Species rich grassland  
Species rich grass mix
-  LE 6.4 Marsh and Wet Grassland  
Wetland and attenuation areas
-  LE 2.1.1 Native woodland mix; to be  
underseeded with species rich grass  
mix for shade
-  LE 2.1.2 Native wet  
woodland mix
-  LE 4.4 Native hedge  
planting with trees
-  LE 5.1 Individual tree  
planting
-  Existing trees to be  
retained
-  Proposed attenuation basin
-  Application site boundary



© Crown copyright and database rights March 2019  
Ordnance Survey 0100031673 - emapsite license

[Previous](#)

[Next](#)

[Home](#)



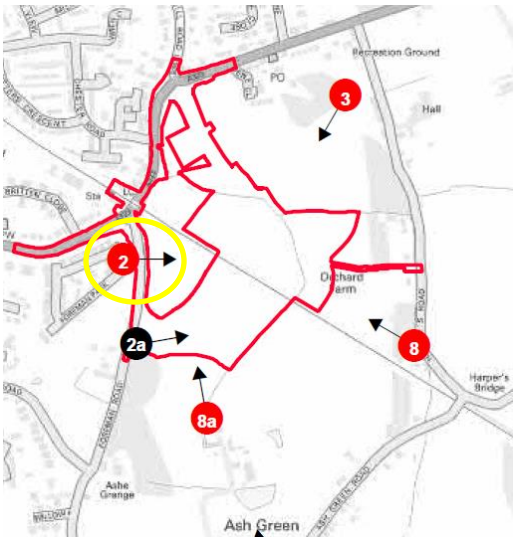
BASELINE (WINTER)



PROPOSED (WINTER YEAR 1)



PROPOSED (YEAR 15)





[Previous](#)

[Next](#)

[Home](#)



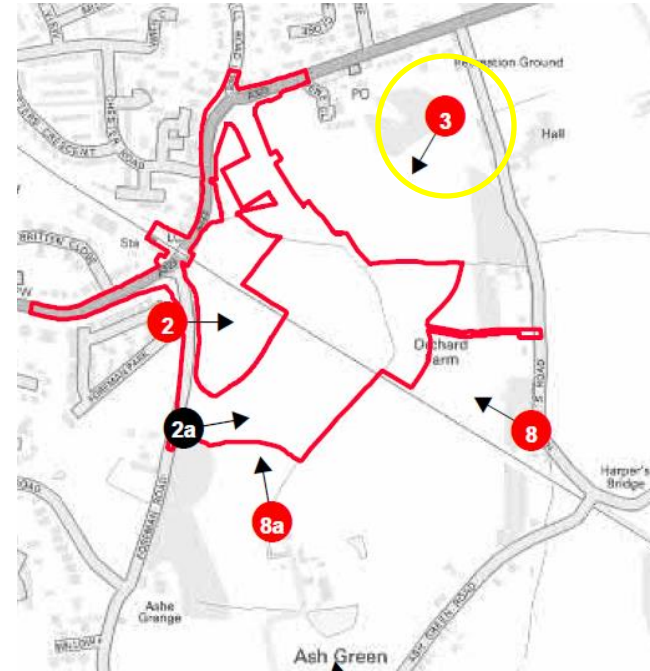
BASELINE (WINTER)



PROPOSED (WINTER YEAR 1)



PROPOSED (YEAR 15)





Foreman Road development

Properties on Quibford Road

Properties on Fox Hill

North Downs railway



BASELINE (WINTER)

Foreman Road development

Properties on Quibford Road

Properties on Fox Hill

North Downs railway



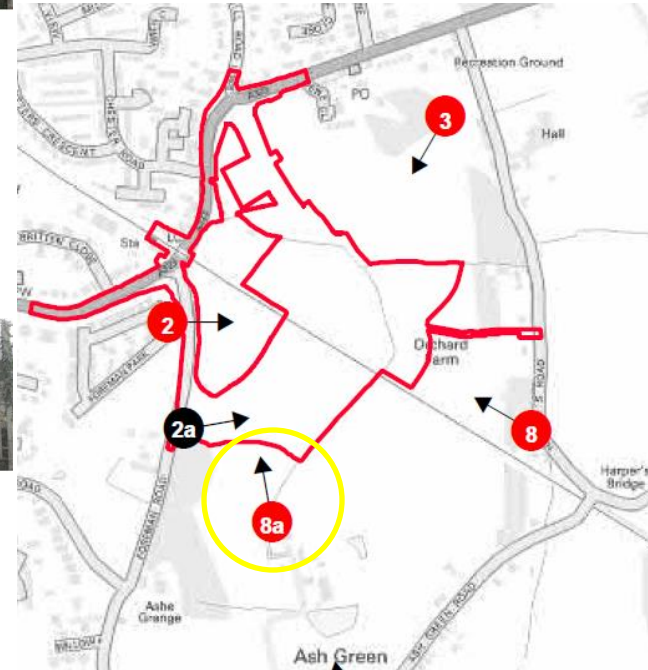
PROPOSED (WINTER YEAR 1)

Properties on Fox Hill

North Downs railway



PROPOSED (WINTER YEAR 15)





[Previous](#)

[Next](#)

[Home](#)



[Previous](#)

[Next](#)

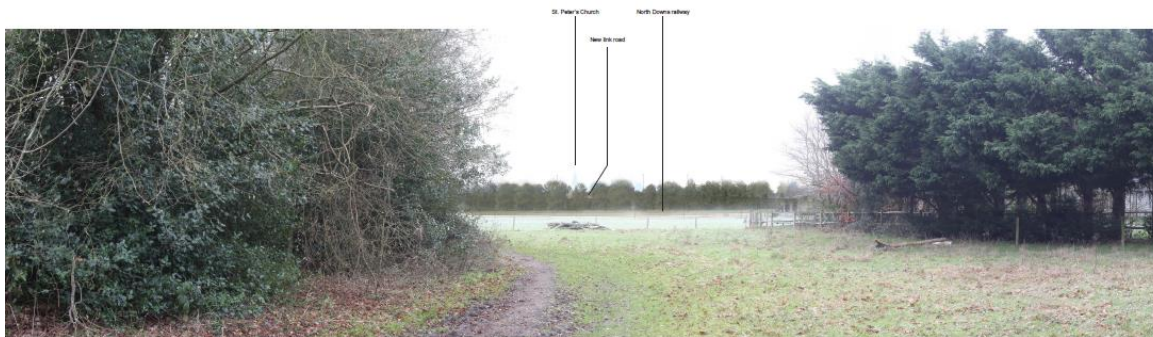
[Home](#)



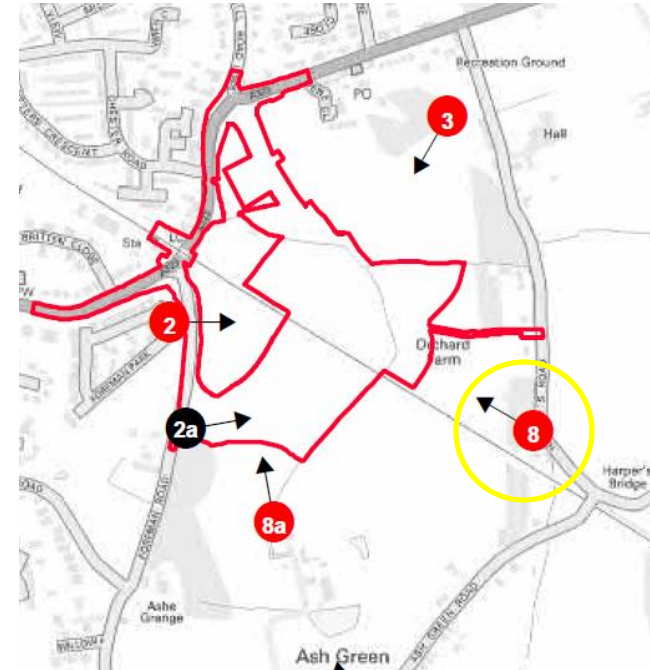
BASELINE (WINTER)



PROPOSED (WINTER YEAR 1)



PROPOSED (WINTER YEAR 15)







[Previous](#)

[Next](#)

[Home](#)



[Previous](#)

[Next](#)

[Home](#)







[Previous](#)

[Next](#)

[Home](#)

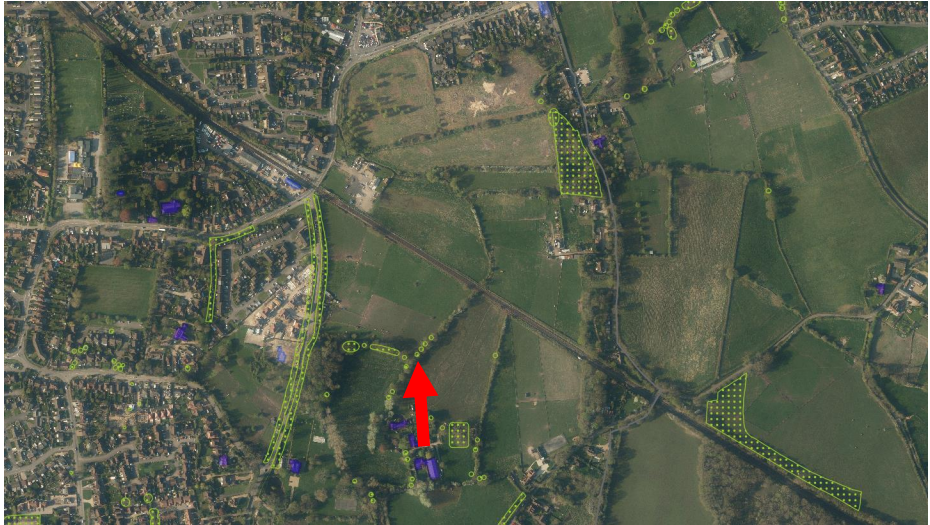


[Previous](#)

[Next](#)

[Home](#)





[Previous](#)

[Next](#)

[Home](#)



© Crown copyright and database rights March 2019  
 Ordnance Survey 0100031673 - emapsite license

[Previous](#)

[Next](#)

[Home](#)

This page is intentionally left blank

**20/P/00864**

**Grangefield Yard,  
Oak Tree Close,  
Jacobs Well  
GU4 7PU**

[Previous](#)

[Next](#)

[Home](#)



Site Location Plan

[Previous](#)

[Next](#)

[Home](#)



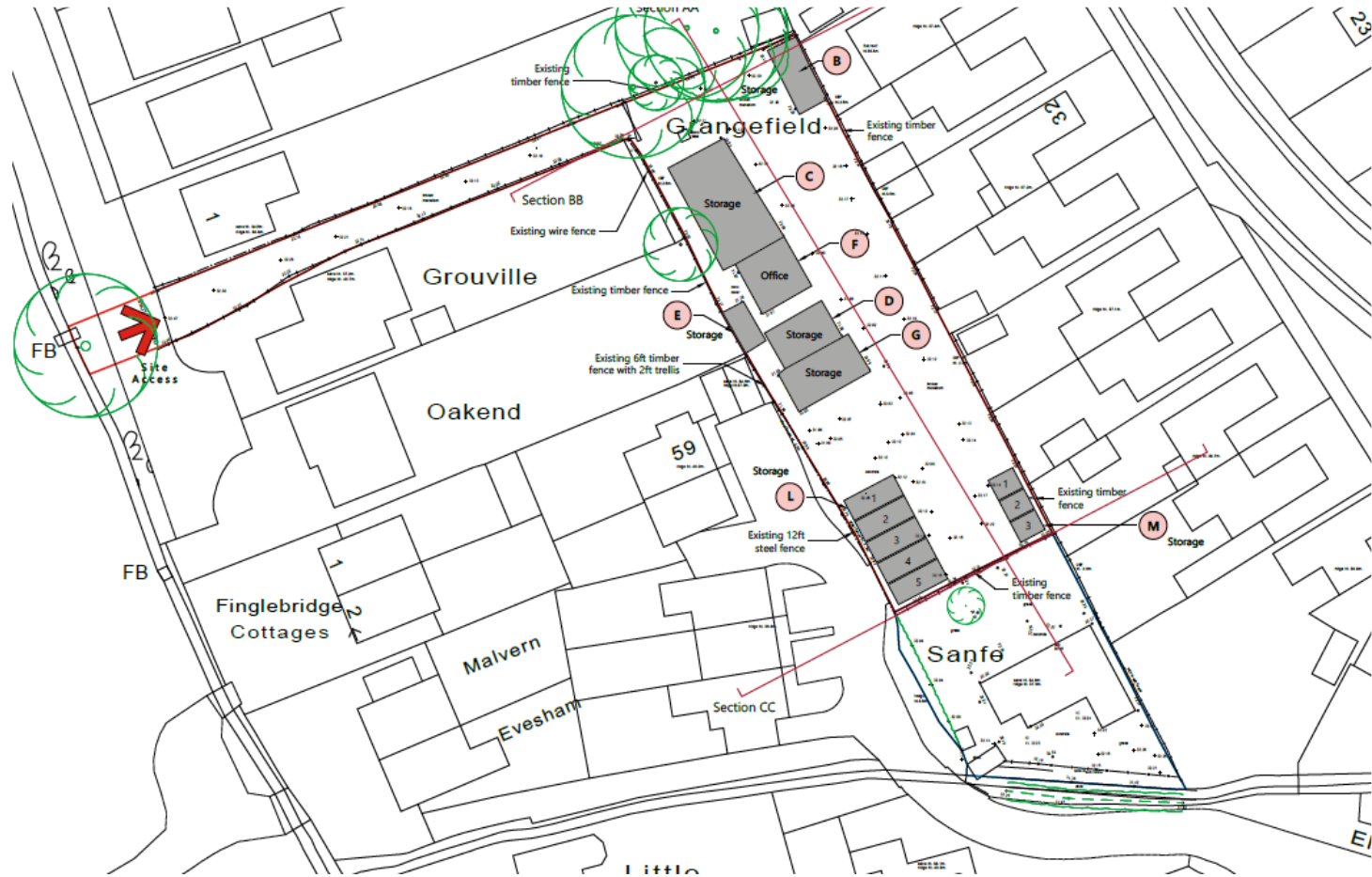


**Aerial View Location Plan**

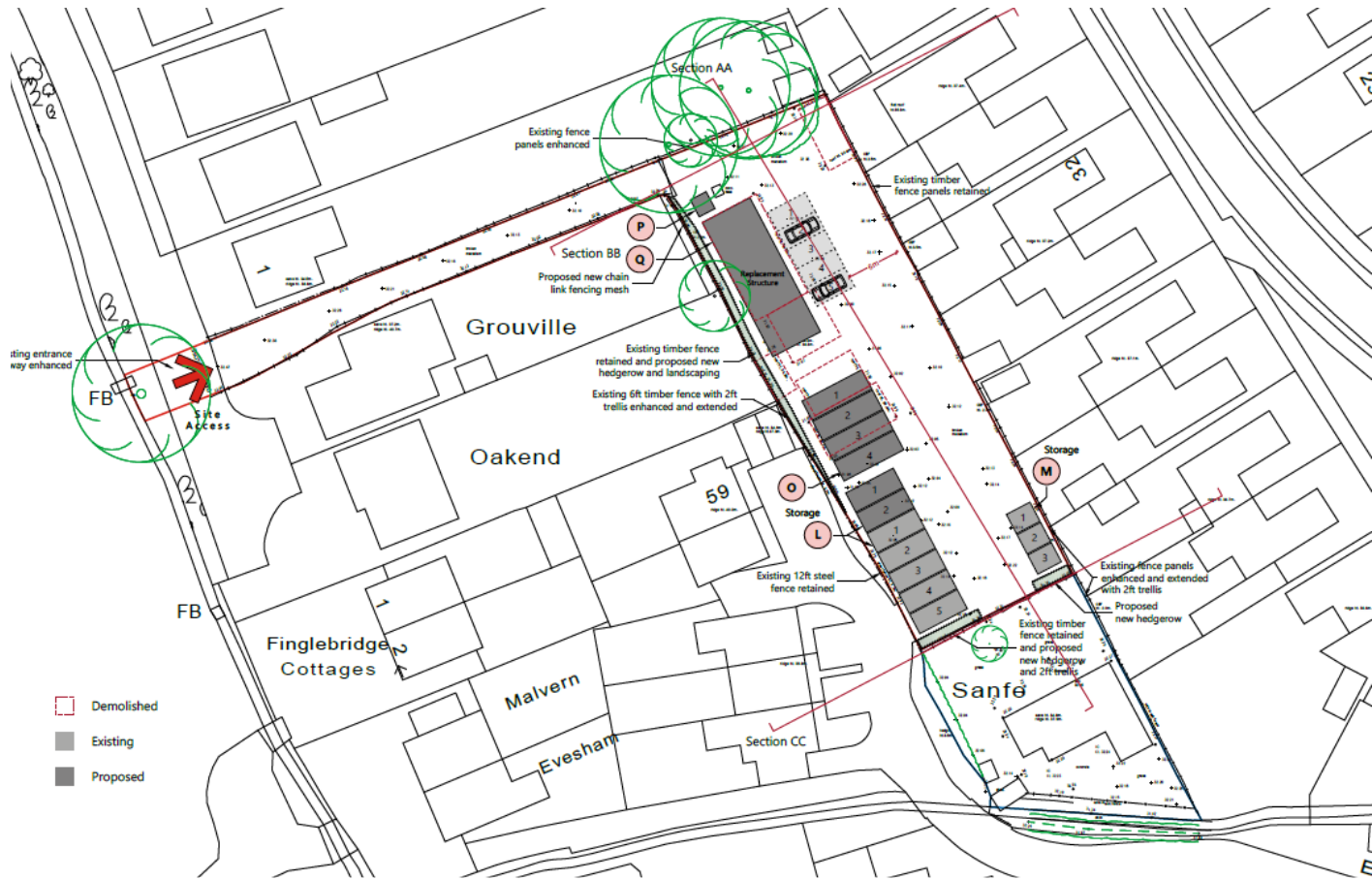
[Previous](#)

[Next](#)

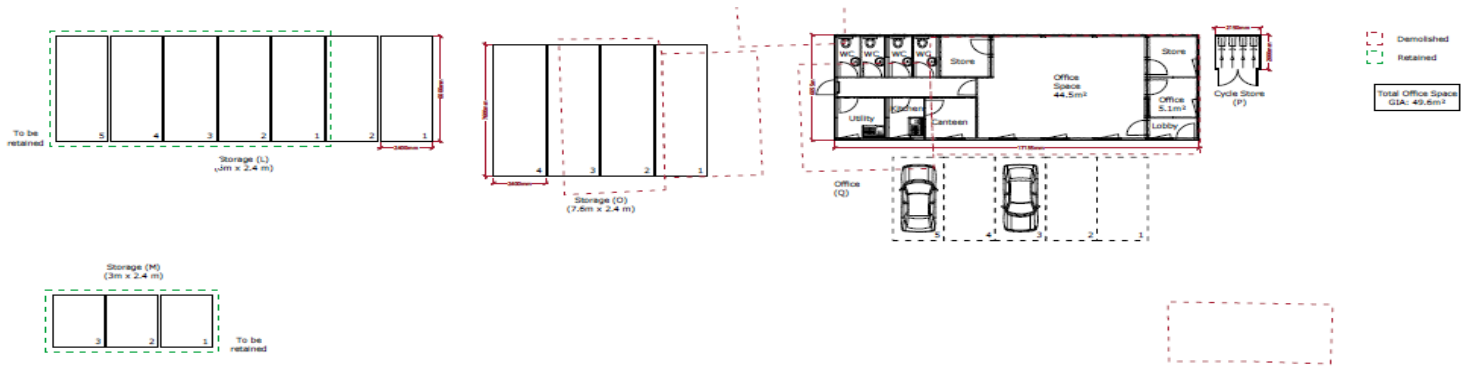
[Home](#)



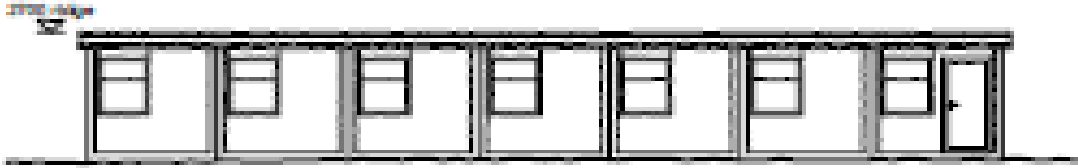
**Existing Block Plan**



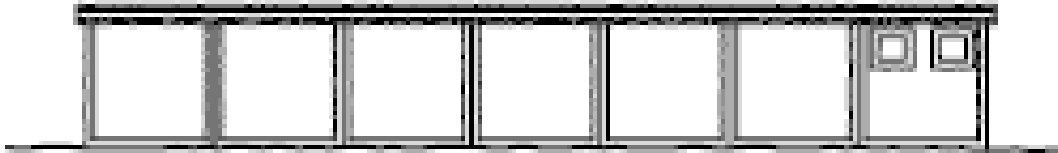
**Proposed Block Plan**



## Proposed Floor Plan



**East (Front) Elevation**



**West (Rear) Elevation**



**South Elevation**



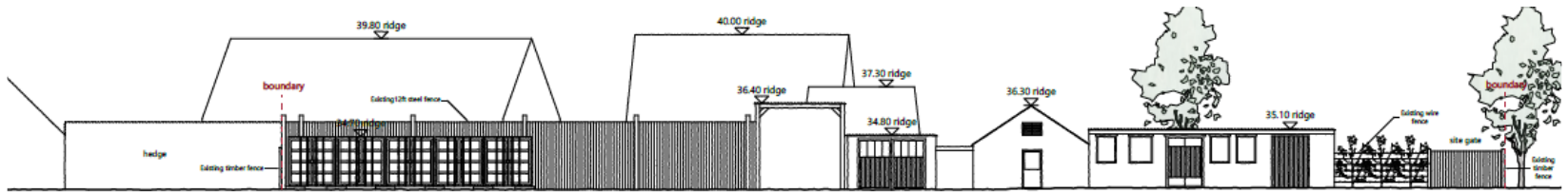
**North Elevation**

**Proposed Elevations – office building**

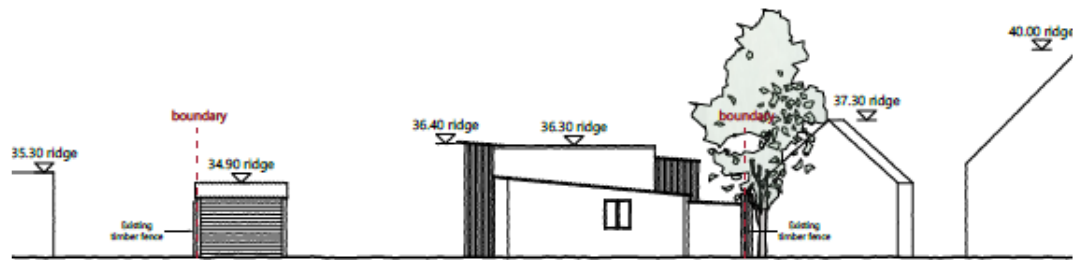
[Previous](#)

[Next](#)

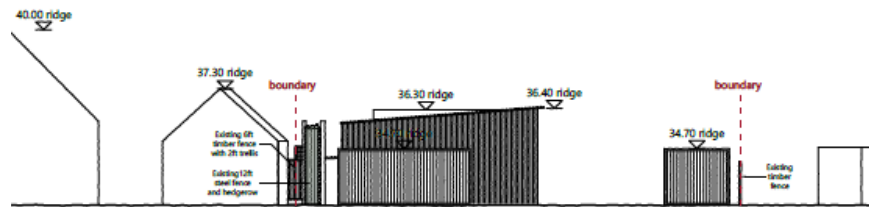
[Home](#)



Existing Site Section AA



Existing Site Sections BB

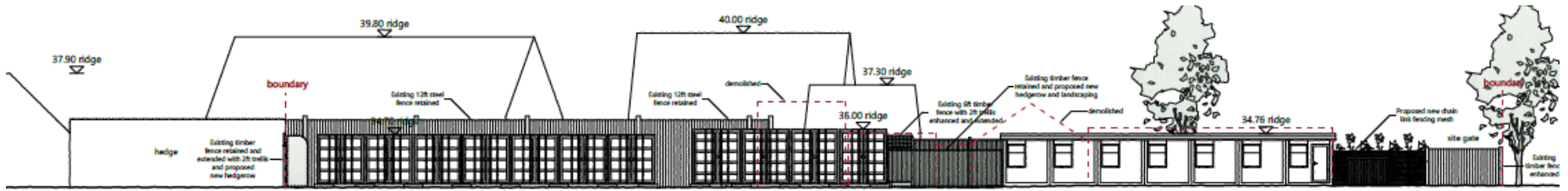


Existing Site Sections CC

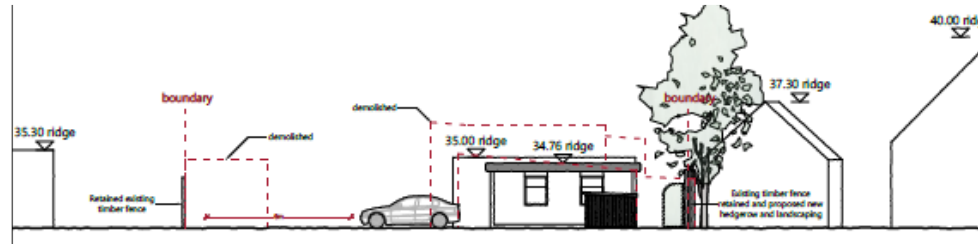
Previous

Next

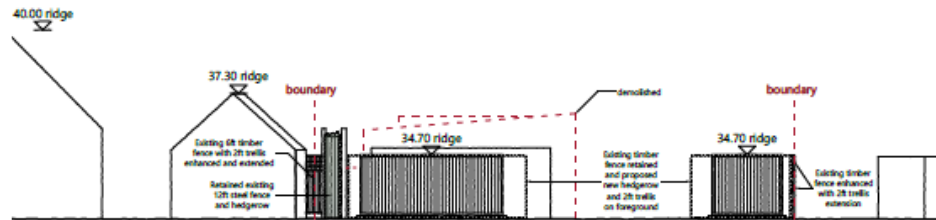
Home



**Proposed Site Sections AA**



**Proposed Site Sections BB**



**Proposed Site Sections CC**

[Previous](#)

[Next](#)

[Home](#)

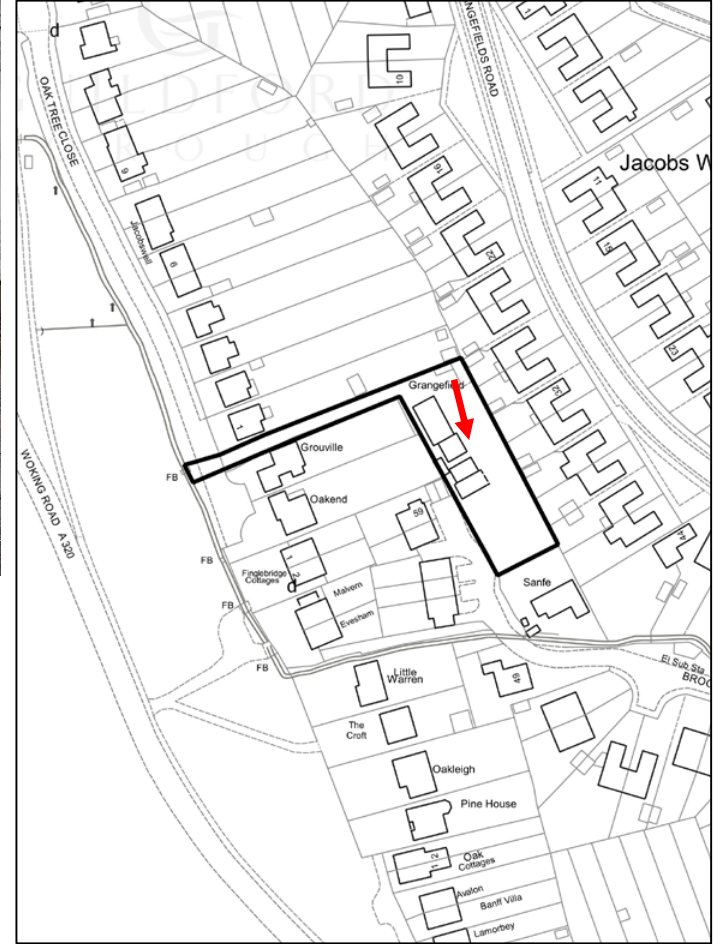


[Previous](#)

[Next](#)

[Home](#)

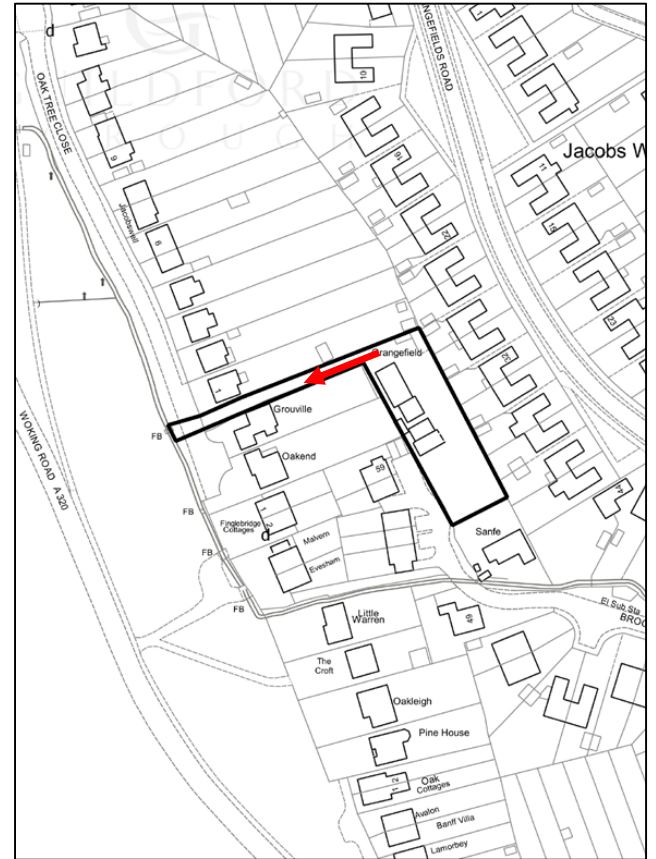




[Previous](#)

[Next](#)

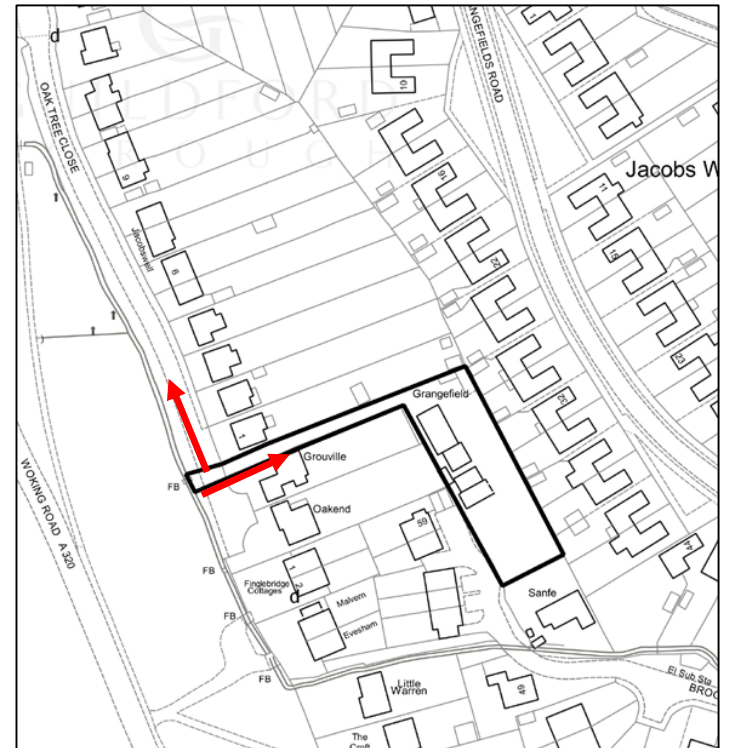
[Home](#)



[Previous](#)

[Next](#)

[Home](#)



[Previous](#)

[Next](#)

[Home](#)

This page is intentionally left blank

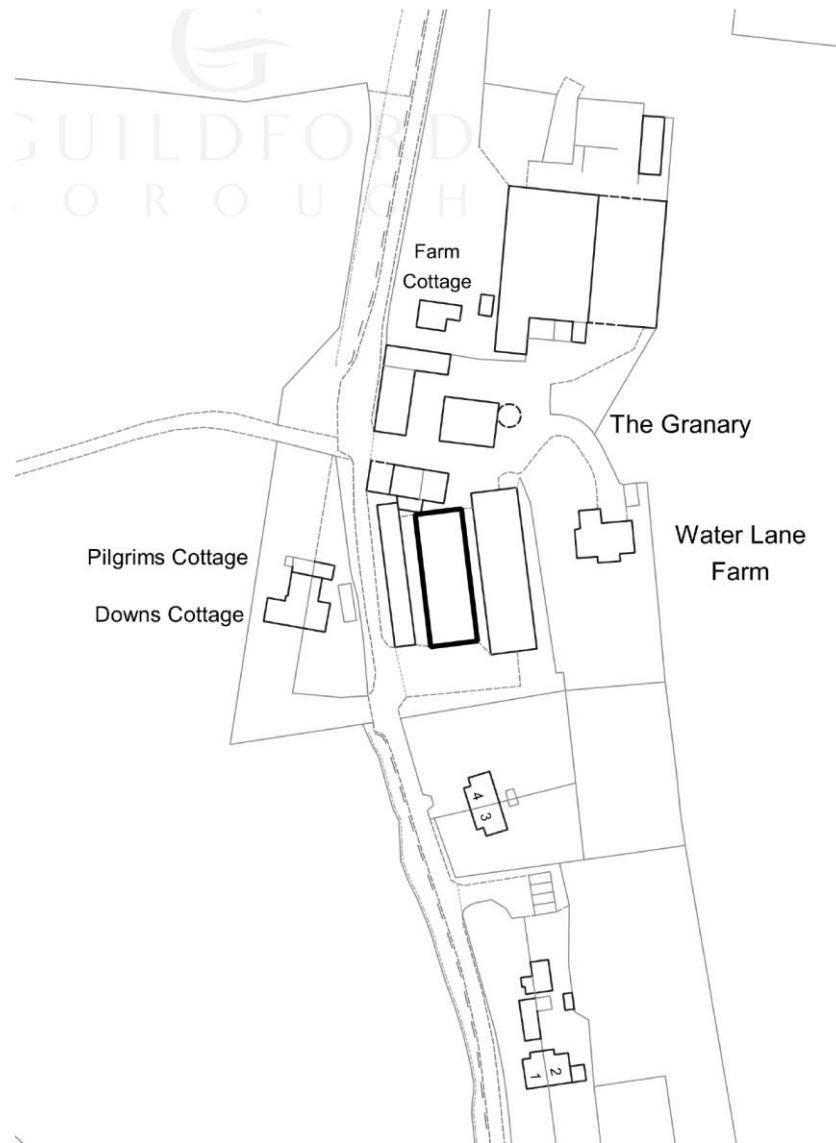
**20/P/00968**

**The Hayloft,  
Water Lane Farm, Water Lane,  
Albury, Guildford,  
GU5 9BD**

[Previous](#)

[Next](#)

[Home](#)

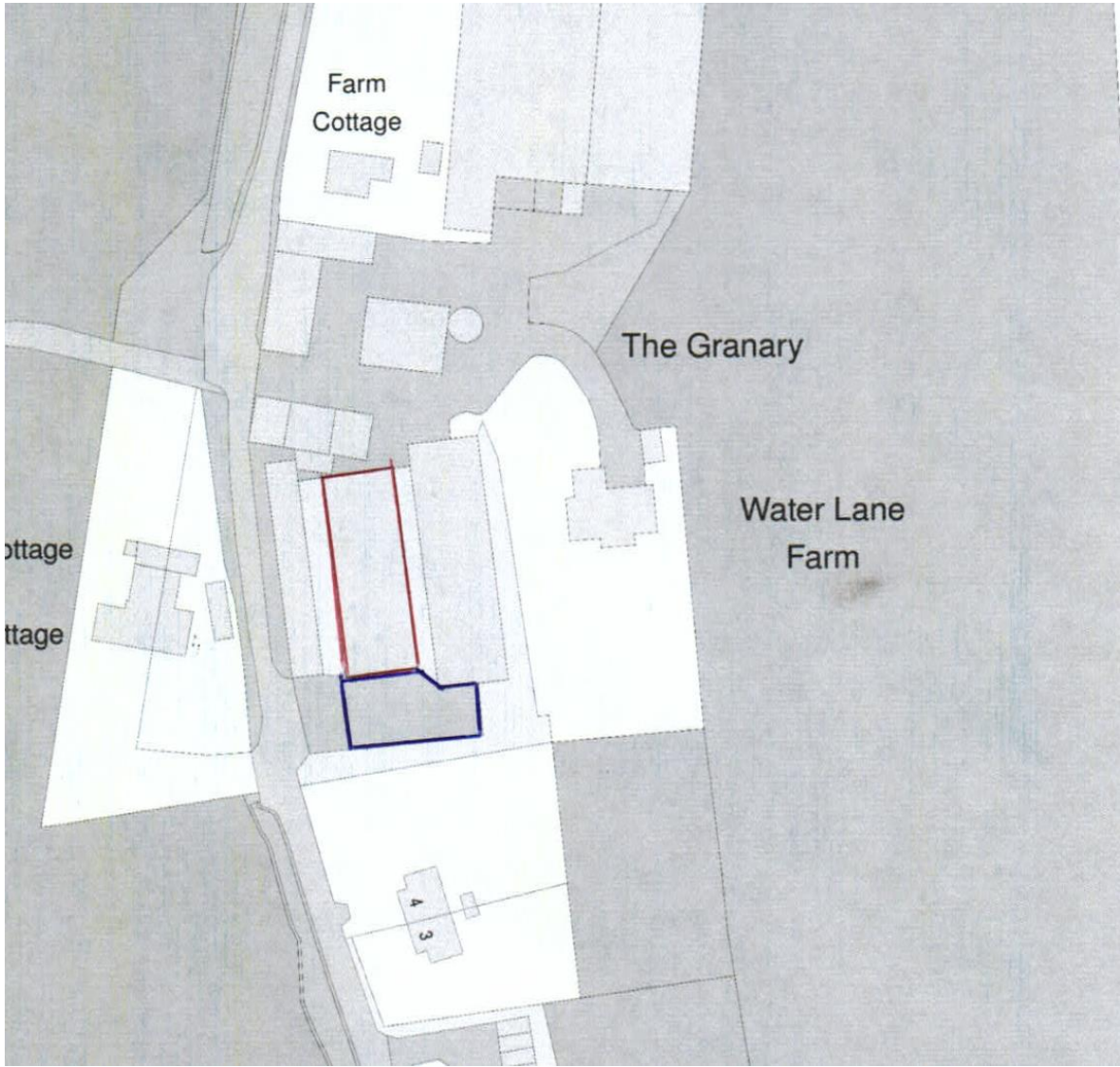


**Site Location Plan**

[Previous](#)

[Next](#)

[Home](#)



**Block Plan**

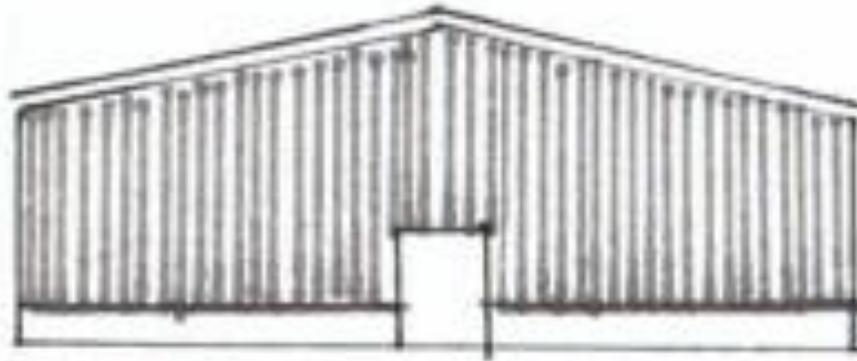
[Previous](#)

[Next](#)

[Home](#)



**Front Elevation**



**Rear Elevation**

[Previous](#)

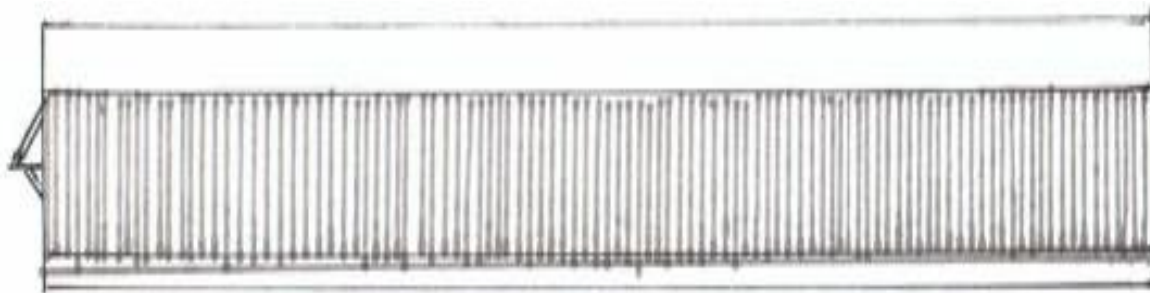
[Next](#)

[Home](#)





**Floor Plan**

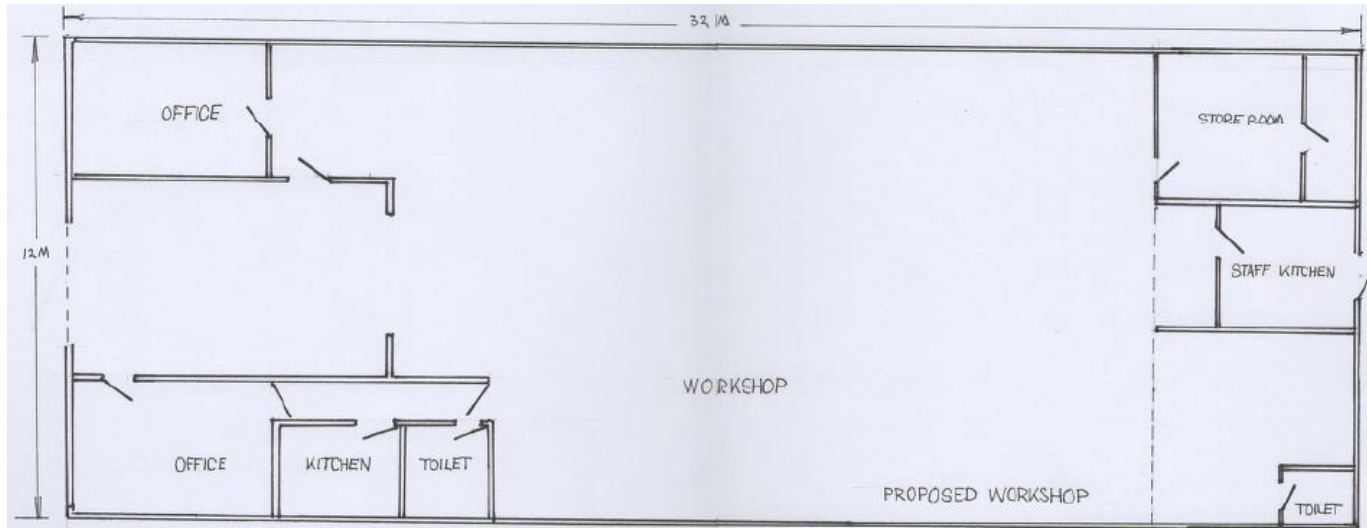


**Side Elevation**

[Previous](#)

[Next](#)

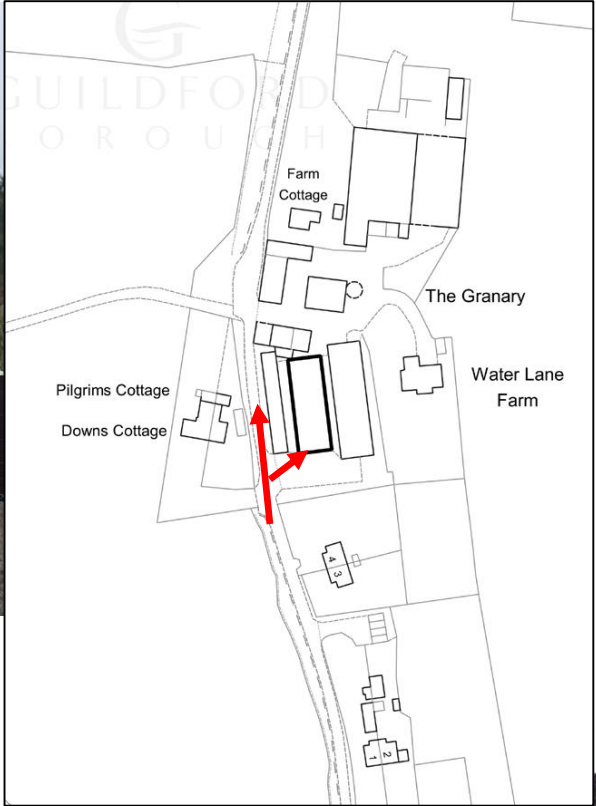
[Home](#)

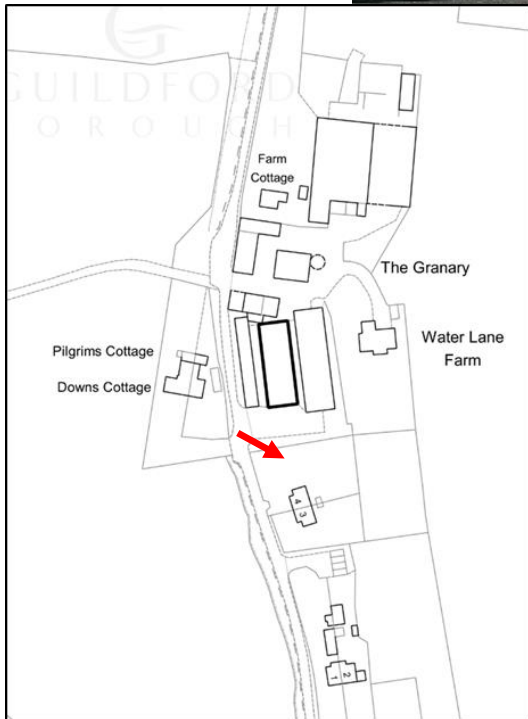


**Proposed Workshop**



**Existing Store**

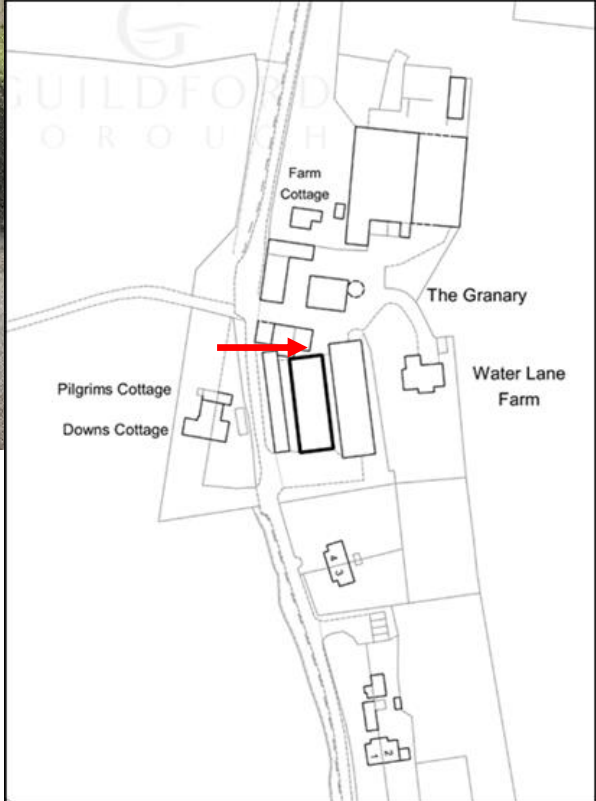




[Previous](#)

[Next](#)

[Home](#)



[Previous](#)

[Next](#)

[Home](#)

